

Marble Buildings, Sidewalks Remain

From Page 3
scow and dumped.

Although the product and methods differ from the old industry, North Country Aggregates, Inc., owned by Robert A. Graham, Jr. of Gouverneur, has been mining marble for over four years from the White Crystal Quarry on the Seavey Road near Gouverneur.

In an operation employing about 25 persons, the extra-

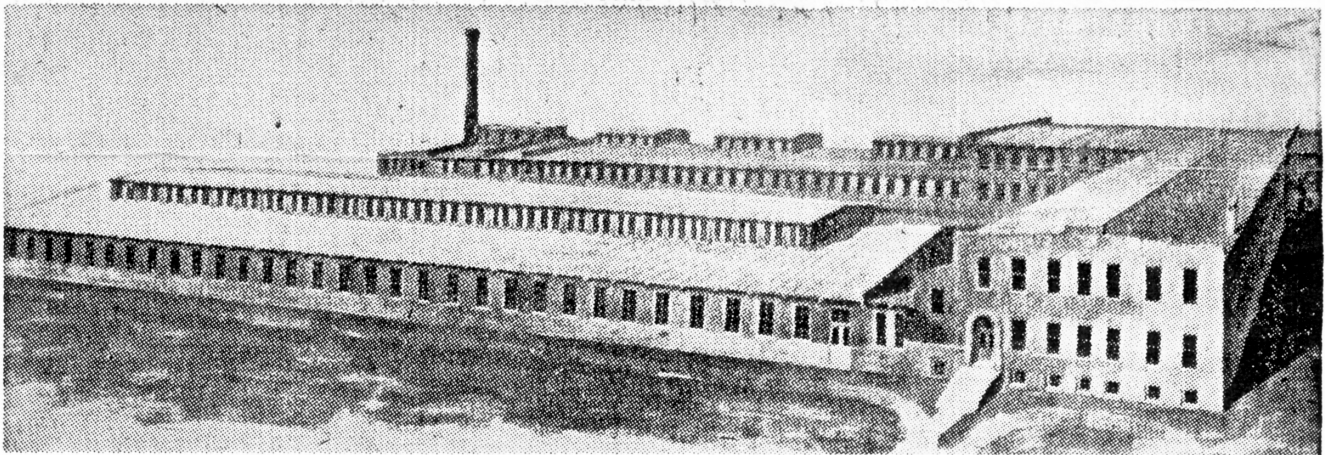
white dolomite is being quarried as marble chips which are marketed for lawn and garden decorations. A substantial amount of the bulk material is being shipped from Ogdensburg by lakers to the midwest where it is bagged for sale at garden centers and by mass merchants. The company also has a more local distribution area of New York State, Ohio, Pennsylvania and parts of New Eng-

land, with the material bagged at the Hailesboro plant, the former International Talc Co. mill, before shipping.

"Fines," or dust remaining from the chipping operation, bagged at the Hailesboro plant and marketed as a masonry mix, is purchased by the white filler industry and used for agricultural lime.

Durability of Gouverneur

marble for construction is proven by the appearance of the stone today in public buildings. The hard crystalline marble, the greater part of which is mottled blue, does not absorb dirt or become streaked or stained, and its close texture makes the stone impervious to moisture and frost. Although the local industry had a comparatively short life, the product seems ageless.



The building still stands, but the International Lace Mills of Gouverneur are just a memory.

*Watertown Daily Times, Wednesday, July 2, 1980
pg. 30, 3 pgs. included*