

Gouverneur Marble Is Being Stockpiled For Stateway Use

Rock Once Graced Lavish Mansions — Used Little Since Days of The Depression.

By MICHAEL KEATING
Albany, Aug. 28. (AP) — A northern New York aristocrat will come out of impoverished but genteel retirement next year and go to work on the empire stateway.
The aristocrat is marble from Gouverneur, which once graced lavish mansions and still supports temples of worship. Now it's going to be mixed in the new expressway's bituminous pavement.
The state public works department is stockpiling the marble. Chips of it will be used in the shoulders of the road. It reflects light.
For Gouverneur marble, this means back to work for almost

the first time since the 1930's. But what work for a stone with this fancy background:

1. Gouverneur marble used in the construction of the Metropolitan Life Insurance company building at 1 Madison avenue, New York city, completed in 1915, now being rebuilt.
2. Gouverneur marble used in the proud mansions that industrial magnates constructed at the turn of the century on Michigan avenue and Riverside drive in Chicago.
3. All over New York state there are Gouverneur marble churches. For instance: St. James, Gouverneur; Trinity, Ossining; the Third Presbyterian, Rochester; Sacred Heart, Syracuse; Our Lady of Help Christians, East Orange, N. J.; the Methodist Episcopal, Glens Falls; and the Jay Gould Memo-

rial chapel in Delaware county.

But the marble mansion era passed. Most of them in Chicago have been torn down. The workmen who quarried the blue-grey rock have long since moved to other jobs or have died and perhaps lie under the very stones they cut. The deep pits have been idle since 1932.

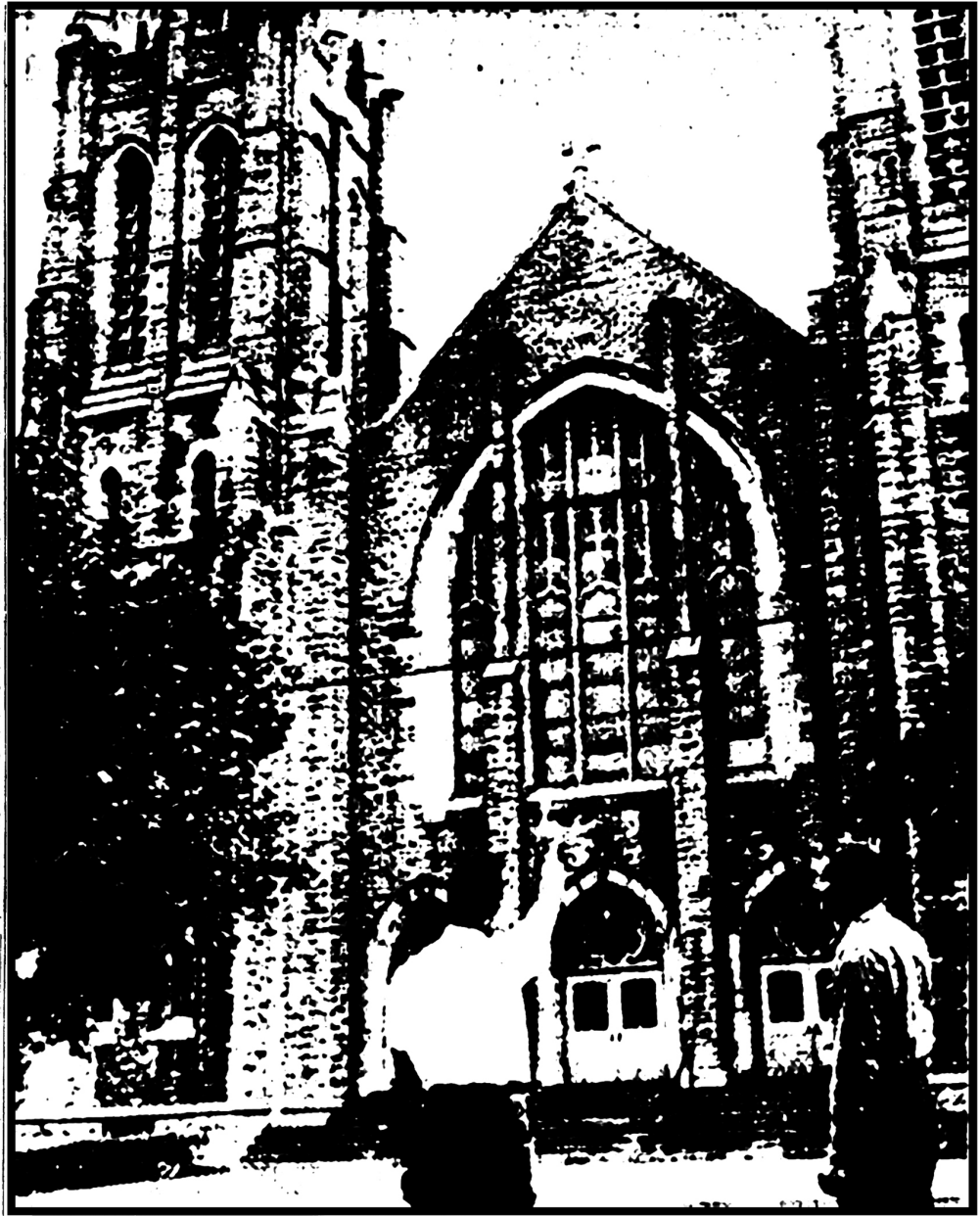
The depression started the stone's slip into obscurity. Then too, other areas began to produce better marble just as cheaply.

Where once 400 men toiled, only a few remain today. They take what marble is lying about and use it for cemetery monuments, decorative work, etc. But there has been no quarrying since 1932.

The state's plan could be a resurrection.

Since the crystals reflect light, the state will put them into the bituminous mix for the shoulders. This will provide a color contrast between the highway and the shoulder, to guide motorists.

The work is to be done experimentally on the section of the Empire Stateway in Jefferson county, it is expected to be completed next year.



GOUVERNEUR MARBLE STRUCTURE—Marble from Gouverneur, once used in the construction of lavish mansions and houses of worship, is headed for highway shoulders along the new Empire Stateway. The State Public Works department is stock piling the stone. It reflects light. The Sacred Heart Roman Catholic church in Syracuse, above, is one of several structures which was constructed with the stone.
(AP Wirephoto)