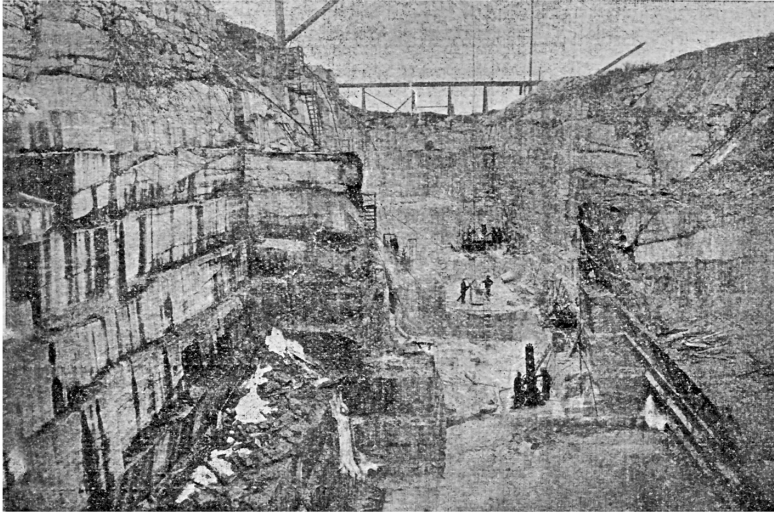


# STONE CRUSHING PLANT AT NORTHERN NEW YORK

**A Big Industry Which Has Sprung Up Here Within the Past Three Years ... The Plant Has a Capacity of 400 Tons Daily and Employs Thirty Men ... Used for Concrete, Ballasting Railroad Beds and Macadamizing Highways ... The Northern New York Marble Company a Big Concern ... A. M. Jepson the Live and Wide Awake Superintendent.**



Thirty years ago the Northern Crushed Stone Company was organized in this village, the interested parties being the same gentlemen connected with the Northern New York Marble Co. In every large marble quarry there is a big amount of waste stone and the object of the promoters of this company was to market it and make it profitable to the company. Besides the waste stone from the mill there is a large amount of quarry waste and when ready for market it is used for doing concrete work, ballast for railroad beds and for macadamizing highways. During the short period of time that the company has been in existence its marble products acquired a wide reputation. The work of the plant for this season began about two weeks

ago and from 30 to 35 men. Italian and Spaniards are principally employed.

The plant consists of a boiler and engine house 46 x 37 feet and the crusher building 100 feet in height and about 60 x 30 feet in dimensions. The boiler has 80 horse power while the engine has 75 horse power.

From the waste piles the stone is carried by skips to the Gates Rotary Crusher stationed on the first floor of the crusher building. The crushed material drops into large elevator cups which is carried to the upper floor where it is dumped into a revolving screen which is perforat

ed with various sized holes and where the stone is separated into one-half, three quarters and two inch sizes. If any pieces of the stone are larger than two inches in circumference they are discharged at the end of the revolving screen in to a reject spout which carries them to a second and similiar crusher which grinds the material into such sizes as to make it pass through the revolving screen. This material empties into the same

elevator taken to the screen and dumped into bins according to its size.

This plant is so constructed that the cars can run under the building. From the floor above are three spouts, one for each of the different sized pieces so that the car may be loaded with whatever size is desired by simply opening the spout.

This plant has a capacity of 100 tons of crushed stone a day and is one of the most prosperous concerns in town. The owners of the company are Geo. B. Massey of Watertown and J. C. Beach of New York.

## NEW YORK MARBLE COMPANY

The Northern New York Marble Company is a stock concern with a capital of \$73,000. Its president is A. C. Beach; treasurer, George B. Massey; secretary and superintendent A. M.

Jepson is a young man who has had many years experience in the marble business and knows it from A to Z. He is capable and energetic and ever wide awake and hustling for the best interest of his two concerns.

Although, as yet, in its infancy, the Northern Crushed Stone Company is already looked upon as one of the prosperous industries which has given Gouverneur so great a reputation as being one of the most active and hustling towns in this north country.

In this connection the TRIBUNE reproduces two half tone cuts showing one of the company's quarries as well as its main building.

Supt. Jepson has charge of both of these companies. He is a young man who has had many years experience in the marble business and knows it from A to Z. He is capable and energetic and ever wide awake and hustling for the best interest of his two concerns.

